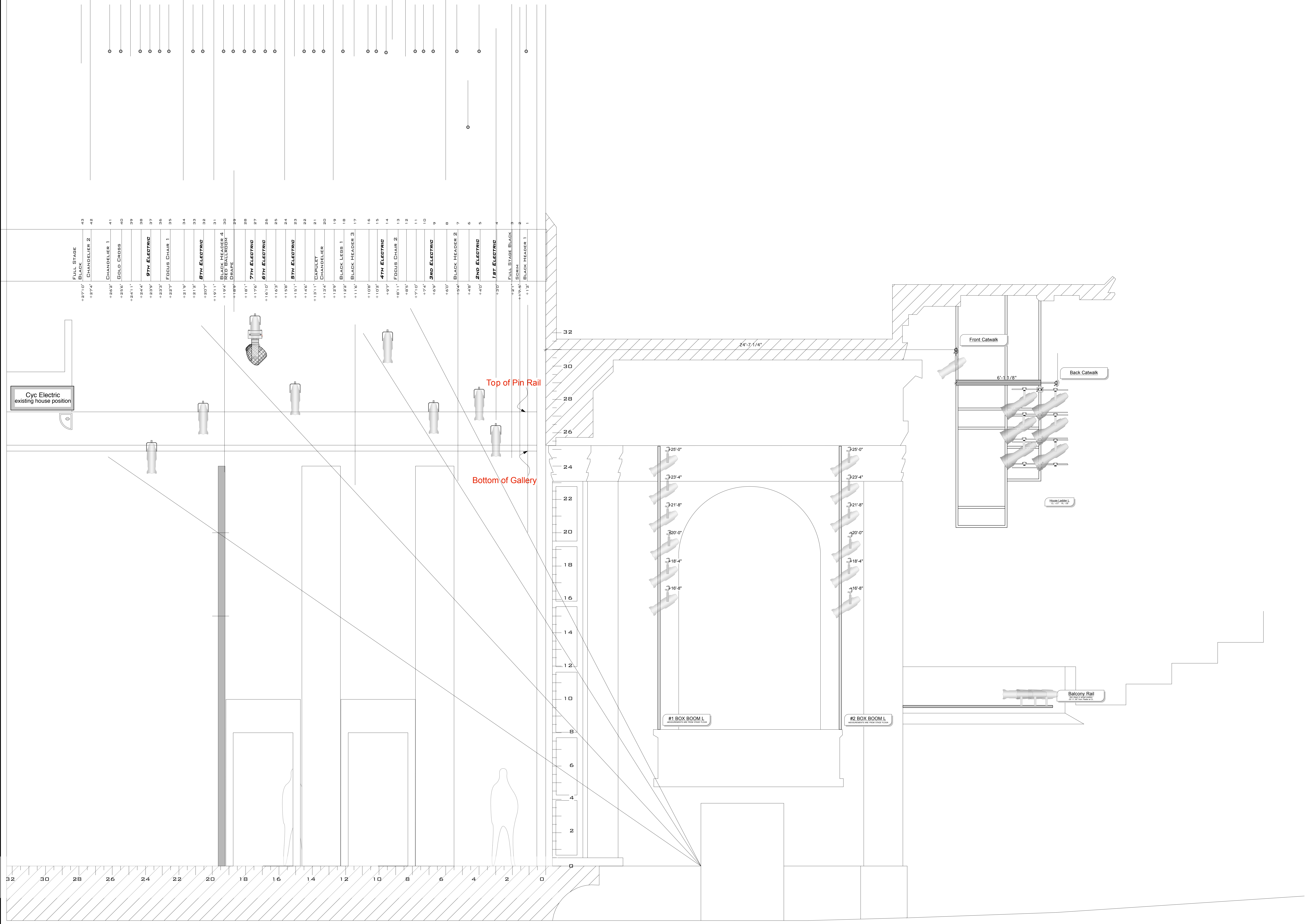


TRUE GRID HEIGHT @ +60'-0" TO GRID FLOOR



KEY TO SYMBOLS:

- ETC SOURCE 4 50° 575W
- ETC SOURCE 4 36° 575W
- ETC SOURCE 4 26° 575W
- ETC SOURCE 4 19° 575W
- ETC SOURCE 4 10° 575W
- ETC SOURCE 4 PAR 575W W/ FULL LENS KIT
- AMRi 5K STUDIO FANCL LDR EXTENDER AND BARN DOORS
- ALTMAN FAR CYC 500W
- WYBRON CXI COLOR SCROLLER
- STUDIO COLOR
- STUDIO SPOT
- MR 16 STRIP LIGHT

NOTATION

COLOR
CHANNEL # UNIT #

NOTES:

- ALL UNITS ON 1'-6" CENTERS UNLESS OTHERWISE NOTED
- R132 (OR SIMILAR) PREPPED FOR S4 UNITS
- BOOMERANGS, IRISES AND MANUAL DIMMERS FOR SPOTS ON CATWALK
- BOOMERANGS COLOR:
 - 1- R3409
 - 2- L202
 - 3- R55
 - 4- R333
 - 5- R59
 - STATIC: R132

THIS DRAWING REPRESENTS VISUAL CONCEPTS AND CONSTRUCTION SUGGESTIONS ONLY. IT DOES NOT REPLACE THE KNOWLEDGE AND ADVICE OF A LICENSED STRUCTURAL ENGINEER. THE DESIGNER IS UNQUALIFIED TO DETERMINE THE STRUCTURAL APPROPRIATENESS OF THIS DESIGN AND WILL NOT ASSUME RESPONSIBILITY FOR IMPROPER ENGINEERING OR USE.

Romeo et Juliette

DIRECTED BY SHARON DANIELS
SCENERY BY CHRIS DILLS
LIGHTING BY AARON SHERKOW

ALD: JESSE SHELDON
PHE: KAT HERZIG
HE: BRIAN SHAW

SCALE: 1/2" = 1'-0" PLATE #
DATE: MAR 22
REVISION: 03/28/10

2 OF 3

Section

KEY TO SYMBOLS:

- ETC SOURCE 4 50° 575W
- ETC SOURCE 4 36° 575W
- ETC SOURCE 4 26° 575W
- ETC SOURCE 4 19° 575W
- ETC SOURCE 4 10° 575W
- ETC SOURCE 4 PAR 575W W/ FULL LENS KIT
- ARRI 5K STUDIO FENNEL FOR EXTENDER AND BARN DOORS
- ALTMAN FAR CYC 500W
- WYBRON CXI COLOR SCROLLER
- STUDIO COLOR
- STUDIO SPOT
- MR 16 STRIP LIGHT

NOTATION

COLOR

CHANNEL #

UNIT #

NOTES:

- ALL UNITS ON 1/2" CENTERS UNLESS OTHERWISE NOTED
- R132 (OR SIMILAR) PREPPED FOR 54 UNITS
- BODMERANGS, IRISES AND MANUAL DIMMERS FOR SPOTS ON CATWALK
- BODMERANG COLOR:
 - 1- R3409
 - 2- L209
 - 3- R55
 - 4- R333
 - 5- R59
 - STATUS: R132

THIS DRAWING REPRESENTS VISUAL CONCEPTS AND CONSTRUCTION SUGGESTIONS ONLY. IT DOES NOT REPLACE THE KNOWLEDGE AND ADVICE OF A LICENSED STRUCTURAL ENGINEER. THE DESIGNER IS UNQUALIFIED TO DETERMINE THE STRUCTURAL APPROPRIATENESS OF THIS DESIGN AND WILL NOT ASSUME RESPONSIBILITY FOR IMPROPER ENGINEERING OR USE.

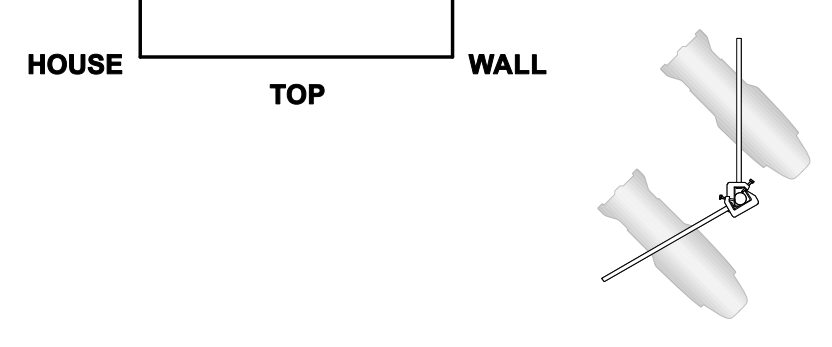
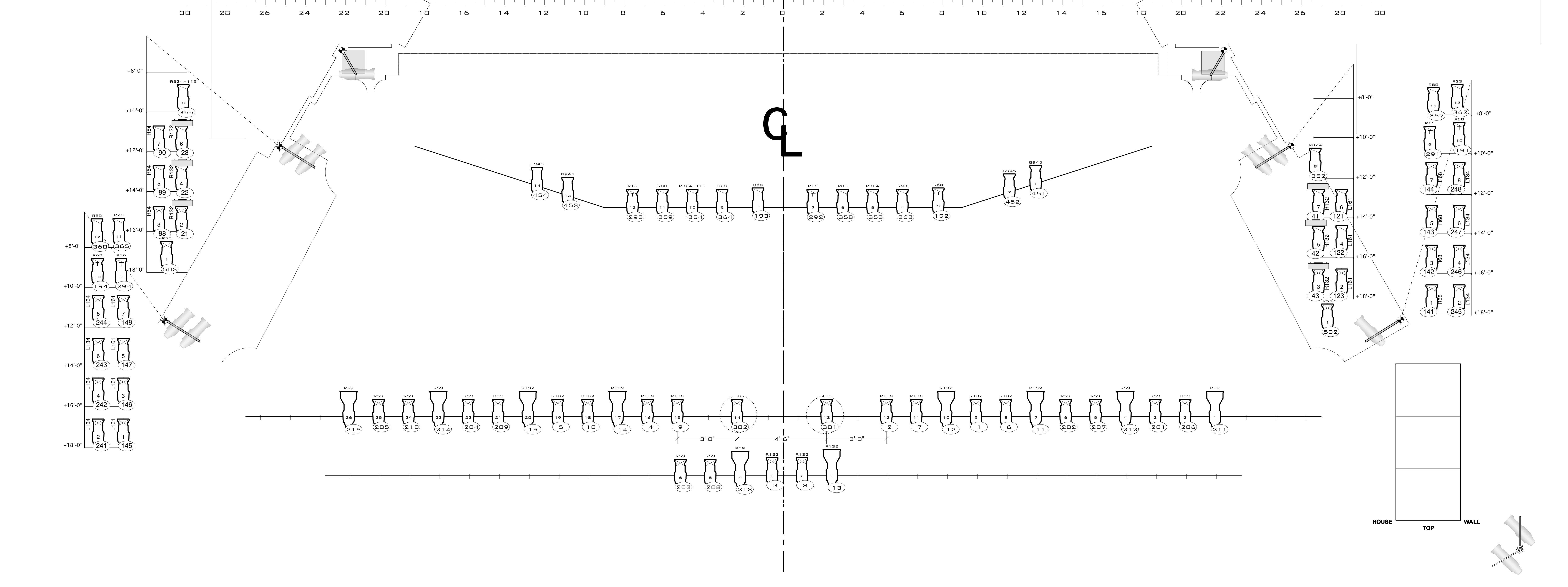
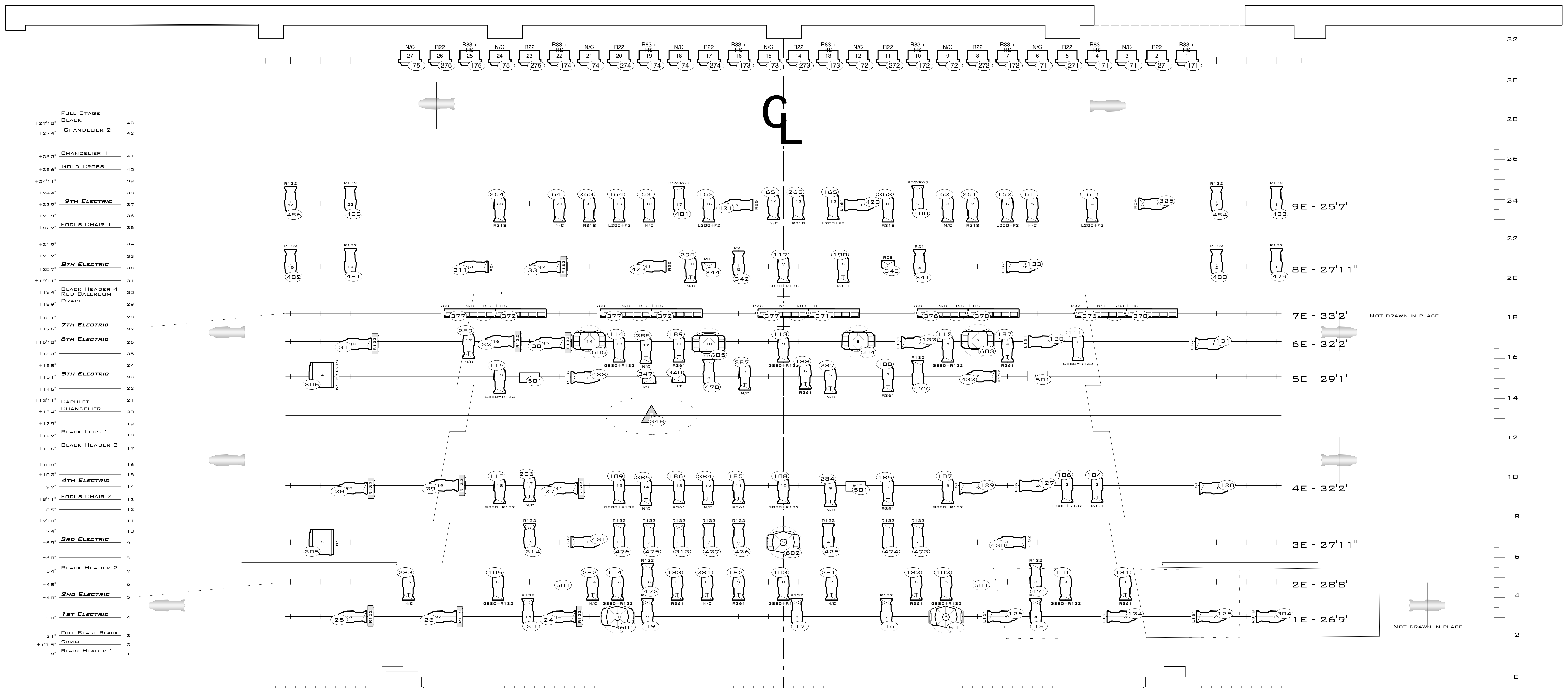
Romeo et Juliette

DIRECTED BY SHARON DANIELS
SCENERY BY CHRIS DILLS
LIGHTING BY AARON SHERKOW

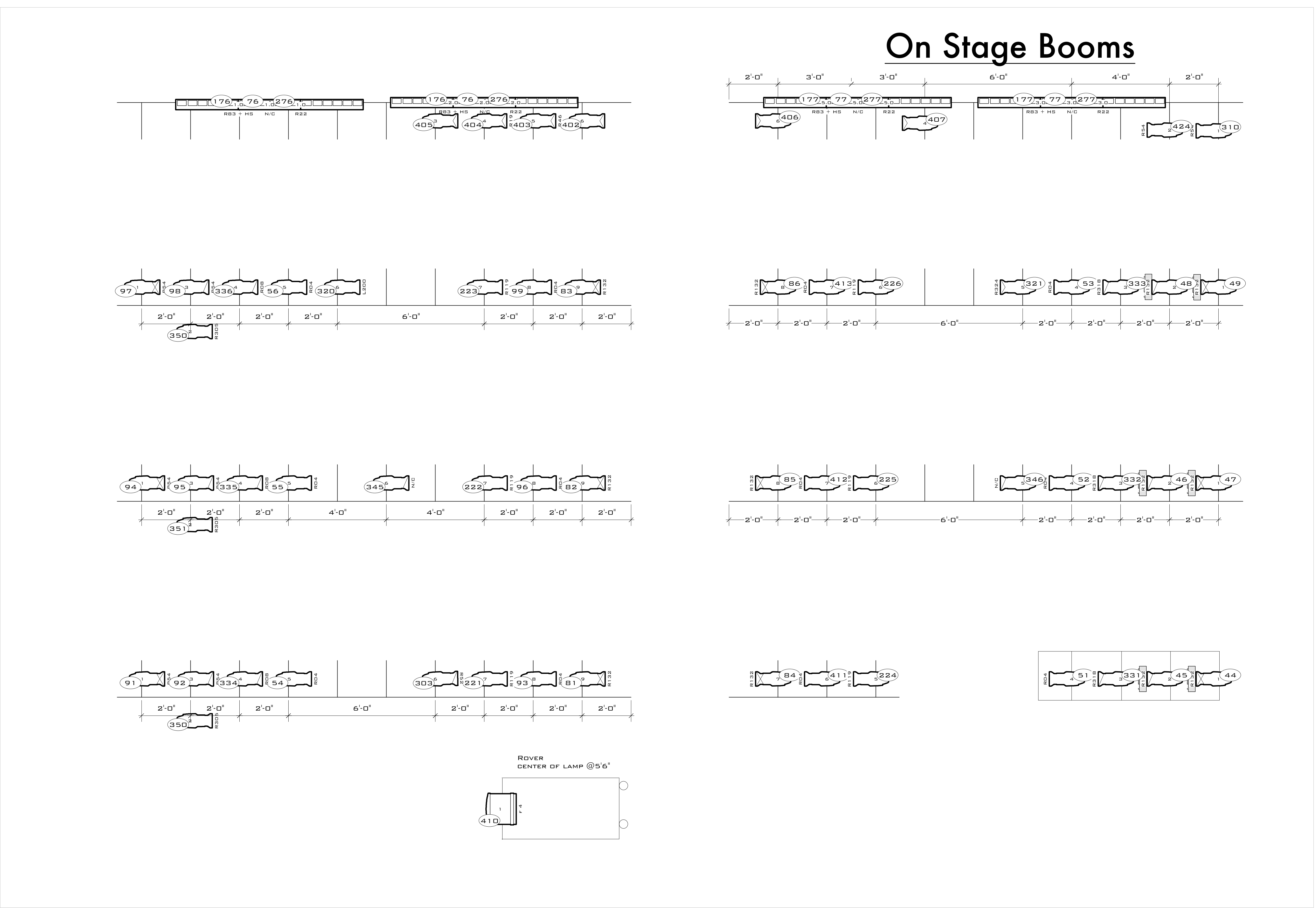
ALD: JESSE SHELDON
PME: KAT HERZIG
MC: BRIAN SHAW

SCALE: 1/2" = 1'-0" PLATE #
DATE: MAR 22
REVISION: 03/28/10

Light Plot



On Stage Booms



KEY TO SYMBOLS:

- ETC SOURCE 4 50' 575W
- ETC SOURCE 4 36' 575W
- ETC SOURCE 4 26' 575W
- ETC SOURCE 4 19' 575W
- ETC SOURCE 4 10' 575W
- ETC SOURCE 4 PAR 575W W/ FULL LENS KIT
- ARR 5K STUDIO FENNEL LDR EXTENDER AND BARN DOORS
- ALTMAN FAR CVC 500W
- WYBRON CXI COLOR SCROLLER
- STUDIO COLOR
- STUDIO SPOT
- MR 16 STRIP LIGHT

NOTATION

COLOR

CHANNEL# UNIT #

NOTES:

- ALL UNITS ON 1'-0" CENTERS UNLESS OTHERWISE NOTED
- R 132 (OR SIMILAR) PREPPED FOR 54 UNITS
- BOOMHANGS, IRIS AND MANUAL DIMMERS FOR SPOTS ON CATWALK
- BOOMHANG COLOR:
 - 1- R3409
 - 2- L222
 - 3- R55
 - 4- R223
 - 5- R59
 - STATIC: R 132

THIS DRAWING REPRESENTS VISUAL CONCEPTS AND CONSTRUCTION SUGGESTIONS ONLY. IT DOES NOT REPLACE THE KNOWLEDGE AND ADVICE OF A LICENSED STRUCTURAL ENGINEER. THE DESIGNER IS UNQUALIFIED TO DETERMINE THE STRUCTURAL APPROPRIATENESS OF THIS DESIGN AND WILL NOT ASSUME RESPONSIBILITY FOR IMPROPER ENGINEERING OR USE.

Romeo et Juliette

DIRECTED BY SHARON DANIELS
 SCENERY BY CHRIS DILLS
 LIGHTING BY AARON SHERKOW

ALD: JESSE SHELDON
 PME: KAT HERZIG
 MC: BRIAN SHAW

SCALE: 1/2" = 1'-0" PLATE #

DATE: MAR 22

REVISION: 03/28/10

3 OF 3

Onstage Detail